



Goldtouch

KOV-M720

USER MANUAL

USB Wired Office Mouse

CONGRATULATIONS ON YOUR PURCHASE

Please read this user manual before using the unit and keep this manual in a safe place for future reference.

Copyright

© 2026 Key Ovation, LLC. All rights reserved.

Trademarks

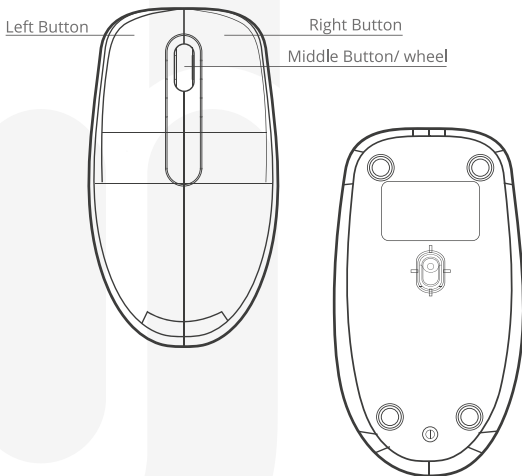
Goldtouch, the Goldtouch logo and Productivity through Prevention® are registered trademarks of Key Ovation, LLC. All other trademarks are copyright their respective owners. All rights reserved.

Installation

1. Connect the USB cable to an available port USB of your PC.
2. Installation of the device is automatic after USB cable connection to a PC USB port.
3. If the device not working , please disconnect it from your PC and check connect pins for possible damage.



MOUSE FUNCTIONAL DESCRIPTION



Technical Specification (Mouse)

Number of the keys : 3
(Left/Right/Scroll Wheel)

Report Rate: 250 HZ

Sensor: FCT3065

Cable: 1.5m PVC

Material: ABS

Dimension (W x H x L):
4.72 x 2.44 x 1.18 in (± 0.03 in)

Weight: 0.2 ± 0.006 lbs.

NOTE

- Technical specifications given in this table are supplemental information and cannot give occasion to claims.
- Technical specifications are subject to change without notice due to improvement of **Goldtouch** production.
- Technical support by **Goldtouch Support**.



GENERAL

- This product conforms to the US and EU requirements.
- The product is made in accordance with RoHS standards. The product is made on accordance with FCC & CE standards. The standards were issued in order to decrease the amount of electronic and electrical waste emitted into the atmosphere.
- The WEEE symbol (the crossed-out wheeled bin) indicates that this product is not home waste. Please protect the environment by recycling appropriately. In order to get detailed information about recycling this product, please contact your retailer or local authority.

CERTIFICATIONS



WARRANTY

There is a one year manufacturer's warranty from date of original purchase date. Customer must submit an RMA form and obtain an RMA number before shipping product back. If product tests non-defective, is damaged, or submitted due to human error then customer is responsible for all shipping costs for return to Goldtouch and back.

After 30 days, customer is responsible for shipping costs to have items sent back for testing.

If defective, Goldtouch will return, at our cost, a replacement factory refurbished product. Warranty for the replacement item continues from the original date of purchase.

The one year warranty does not cover Abuse or Normal wear.

Register your product online:

<https://www.goldtouch.com/support/warranty-registration/>

Important: Be sure to retain your proof of purchase and for non-European purchasers we recommend registering your Goldtouch Keyboard as it may be required for warranty service.

Information in this document is subject to change without notice. No part of this document may be reproduced or transmitted in any form or by any means, electronically or mechanical, for the purpose, without the express written permission of Key Ovation, LLC. All trademarks are the property of their respective owners.

© Key Ovation LLC; All Rights Reserved.



Goldtouch

TECHNICAL SUPPORT
HAVING TECHNICAL PROBLEMS
WITH THIS PRODUCT?

Send a mail to support@goldtouch.com
for more information, please visit
www.goldtouch.com